



K

nef | RESERVE
KANDILLI



OLD
SOUL



NEW
HEART



Old soul New heart

**WELCOME TO AN EXCLUSIVE
BLEND OF CLASSIC TRADITION
AND MODERN LUXURY.**

Nef presents a unique reinvention of a historic Istanbul neighborhood, with a new heart, a new life-beat and a bright new future.

Endless horizons offer boundless inspiration, evoking majestic beauty and the power of heritage. The location of the development in the heart of Kandilli – provides the perfect setting for vibrant living, a delightful lifestyle, and a wonderfully dynamic and warm community – the perfect home.

The development has a total of 29 buildings, providing the pinnacle of graceful and elegant urban living. The location comprises of stunning greenery and rejuvenating lush landscapes, along with romantic, inspiring views of the Bosphorus and its majestic villas and palaces.



Contents

01

THE MASTER PLAN	11
MAP	14

02

KANDILLI LIFESTYLE	37
BUILDINGS	43
INTERIORS	45

03

YOUR LIFESTYLE	53
FOLDHOME RESERVE	65

04

THE DETAILS	69
THE PAYMENT PLAN	70

05

THE DEVELOPER	73
NEF	74
NEF RESERVE GOLKOY	76
NEF RESERVE BEBEKOY	78
NEF RESERVE YALIKAVAK	80
CONTACT DETAILS	83



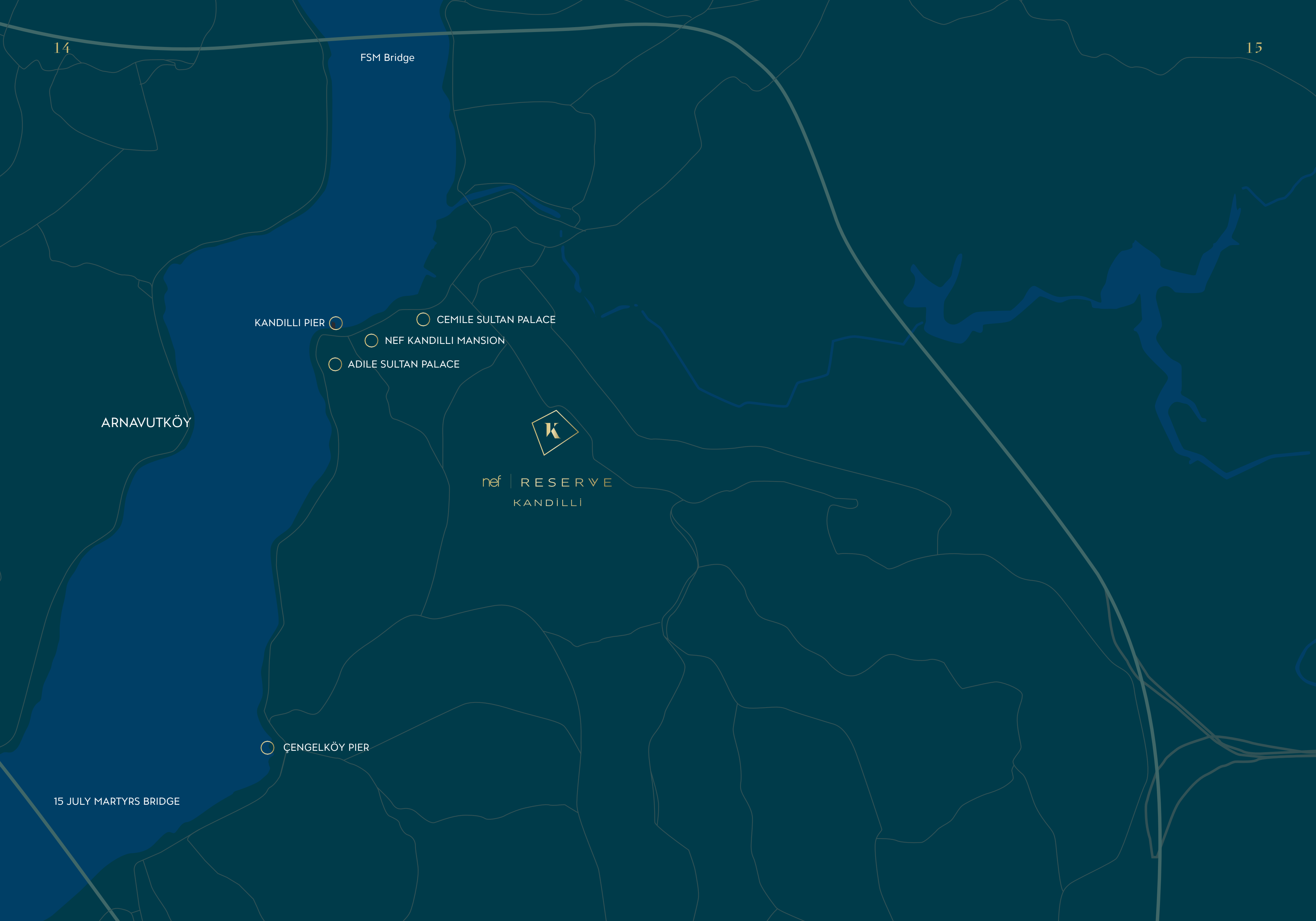
THE MASTERPLAN



The best of both worlds

**SPECTACULAR LUXURY
AND DIGNIFIED HERITAGE.**

Like the magnificent city of Istanbul, the Nef Reserve Kandilli combines the best of both worlds, paying homage to the centuries-long tradition of prosperous, dignified living in the area, while featuring all the modern exigencies of luxury, spectacular views of the Bosphorus and the restoring presence of green nature.



14

15

FSM Bridge

KANDILLI PIER

CEMILE SULTAN PALACE

NEF KANDILLI MANSION

ADILE SULTAN PALACE

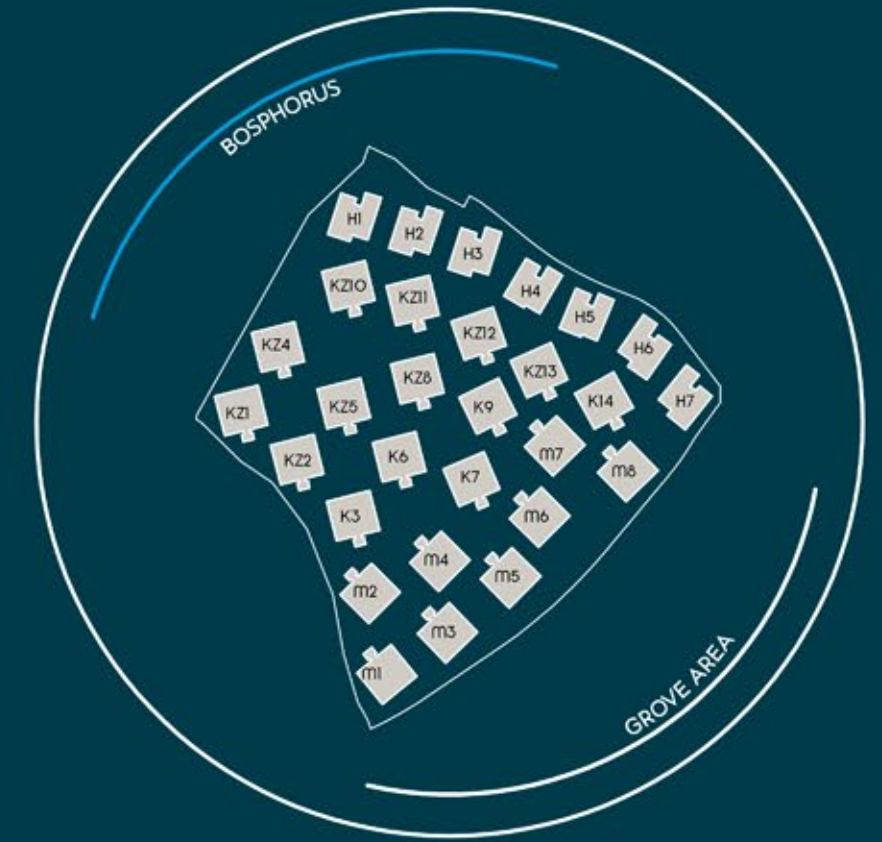
ARNAVUTKÖY



nef | RESERVE
KANDILLI

ÇENGELKÖY PIER

15 JULY MARTYRS BRIDGE



MASTER PLAN

New energy in Kandilli —

NEF BRINGS SOPHISTICATED LUXURY
AND REFINED ELEGANCE.

Walking around the neighborhood you can relax and be inspired while exploring the magnificent Adile Sultan Palace, then indulging in mouth-watering cuisine coupled with breathtaking views of the Bosphorus. The sound of the water, the sun setting, and the hum of friendly chat is the best accompaniment while you sample the tastiest fish or traditional Turkish dishes - either in palatial-style restaurants or quaint little neighborhood spots.

BE INSPIRED BY SOPHISTICATED LUXURY AND REFINED ELEGANCE
IN A PRIME LOCATION THAT HONORS TRADITION IN 21ST CENTURY STYLE.

Every experience is a delight

Natural harmony —

MIRRORING BOSPHORUS
MANSIONS, THROUGH A
CONTEMPORARY INTERPRETATION.

The Nef Reserve Kandilli features 29 buildings, set on various existing site levels, giving each building beautiful views or a unique vibrancy, while endowing the whole development with a life-celebrating dynamic. Each building has been carefully placed in the most visible and prominent position. Surrounded by rejuvenating lush trees, lively landscapes and calming stone paths, the buildings are easily accessible for pedestrians, feature underground garage space, and are interconnected through walkways.



Contemporary heritage —

HONORING THE BOSPHORUS TRADITION

Renowned for designing structures that blend perfectly with the landscape, the architectural genius of Emre Arolat brings a new heartbeat to the lovely historic neighborhood of Kandilli.

Famous for the ability to reconcile the identity and rootedness of the context in a place, with the demands of the contemporary world; Emre Arolat's studio created two types of buildings for Nef Reserve Kandilli.

The first draws from the traditional Kandilli architecture, is inspired by the stately Bosphorus mansions and their characteristic waterside formations. Layouts are grand, from 5+1 duplexes and penthouses to 3+1 flats, with sprawling terraces and balconies.



At one with nature





A place of beauty

Fresh horizons —

**BLENDING 21ST CENTURY LUXURY
WITH INNOVATIVE FINE LIVING FEATURES.**

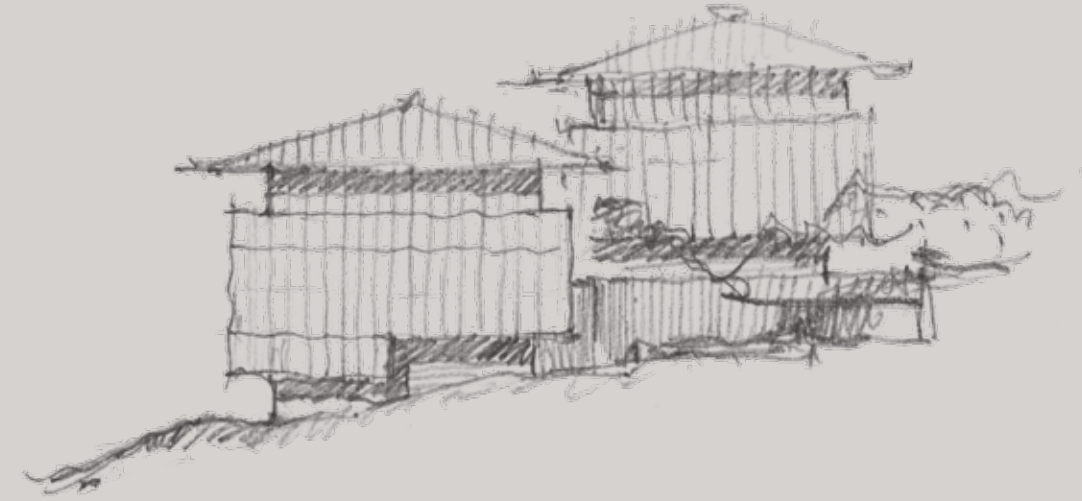
The second type of building created by Arolat for Nef Reserve Kandilli is characterised by a contemporary approach, where modern architectural features serve to blend seamlessly the building into the surrounding slopes, without disturbing the natural beauty of the land.

The landscape texture is particularly intricate here, designed by the famous German landscape architect Herman Salm, noted for his unique ability to blend cultural influences and social needs with the characteristics of the land – to create places of beauty and distinction.

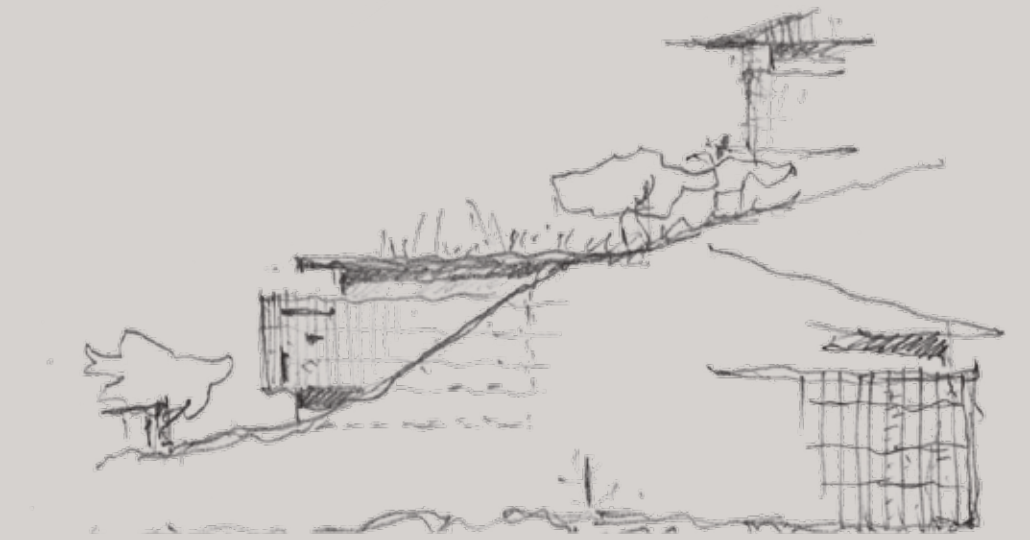
The units in this building go from 2+1 to 3+1 as layouts, and feature flat roofs and open balconies, thus allowing you to delight in the uncommon spaces and abundant green scenery all around.

“Our design approach begins with a lengthy research and debate about area, local patterns, cultural and physical resources, as well as the collective and psychological features of the project. This allows for the identification of specific questions, vital to the project and particular situation, taking into account special conditions, and configuring them within the framework of passion, intuition, knowledge and experience.”

EMRE AROLAT
THE ARCHITECT - KANDILLI



Nef Kandilli 02-17



*Özellikle en'ün mezarlığı ile ilgili
araziye ilişkin eğilimle birlikte hareket ederek
topografik hale gelmesi ve 4 eğimli
gibi yerine arka planı paylaşıyor bir par
çaya dönüşecek şekilde tasarlanıyor
çok daha doğru olacaktır.*



“The soft touch of timber and the earth-colored cladding material create an inviting surface texture, while the undisturbed clear surfaces offer spectacular views and give a unique identity to the buildings.

The landscape treatment for Nef Kandilli will be one of the most visible and synonymous elements of the completed project and give the development a ‘genus loci’.”

HERMAN SALM
LANDSCAPE ARCHITECT

Spectacular views —

AN INSPIRATION TO ADMIRE BEAUTY,
LIFE AND TO REJOICE.

At Nef we believe that “the most valuable thing we have is life itself. We believe that it must be designed in the best way possible.” That’s why for our exclusive project in Kandilli we chose to endow our spectacular apartments with inspirational and breathtaking views of the magnificent Bosphorus. So when you stand on your perfectly designed terrace, sipping tea, or sit on your plush sofa in the living room looking out the floor-to-ceiling glass walls you can ponder the immense beauty of the water and the happiness that such things bring to our life.



Your new outlook



FLOOR-TO-CEILING GLASS WALLS AND
PERFECT TERRACES ENHANCE THE VIEWS



Designed around your happiness



Elegant and refined —

ENSCONSED IN LUSH GREENERY,
WITH BREATHTAKING VIEWS OF
THE BOSPHORUS.

Nef Reserve Kandilli comprises 29 superbly crafted buildings, where each apartment is created to be an embodiment of modern yet sophisticated affluence, with a prestige that doesn't boast or shout, but quietly exudes a stately kind of grace, timeless style and intrinsic class.

Nef's approach is to create beautiful and carefully elaborated living spaces, with solutions that bring happiness – each project is realized to give the essentials of freedom and joy to the people living within it.

The Nef Reserve Kandilli has its unique community lifestyle, based on the shared values of elevated fine living, centered around an exciting array of features and amenities, created to enhance personal growth, holistic well-being, dynamic social interaction, and to provide a long-lasting sense of fulfillment and belonging.

When you're in Kandilli, life slows down, taking on the rhythm of the ancient Bosphorus. It becomes sweeter – not so noisy, not so crowded, not so fast. You discover that you have more time to appreciate the small pleasures in life – to enjoy drinking your coffee in a corner cafe, to savor that special first bite in your favorite restaurant, to pick out flowers for the dining room table, or just stroll the streets, nodding to familiar faces, having a chat with your neighbor, and enjoying that most splendid of sunsets on the Bosphorus.



A place to cherish for generations —

IN KANDILLI YOU HAVE A FRIENDLY
FACE, EVERY STEP OF THE WAY.

In every mom-and-pop shop, swanky little boutique, cozy cafe or busy neighborhood restaurant they know your name, what you usually drink, your taste in food, how old your kids are, when your parents are coming to visit, and how to cheer you up with a simple gesture, a smile, a flower, a wave hello, when you need it most.

Here no one is just another anonymous individual wandering lonely through life and the bustling city – everyone is a welcome neighbor, a friend, part of a close-knit community, and a vital piece of the tapestry of Kandilli life.



Perfect home essence



Arrive relaxed —

SUPERIOR QUALITY OF PRODUCTS
AND MATERIALS.

All buildings come with a variety of apartment sizes, to fit a range of space needs, from 3 + 1 to 5 + 1. All 406 apartments are consistent in their nature-inspired design, luxury interiors and essential features, such as round-the-clock hot water, specially ventilated windows, cloakroom cabinet in the entrance hall, superior quality laminated wood floors throughout, natural stone and premium ceramics in the bathroom and kitchen areas, as well as suspended feature ceilings in the bathrooms with spotlights. The kitchen is equipped with state-of-the-art appliances, including built-in dishwasher, electric stove, built-in refrigerator, oven, microwave and aspirator. Each apartment is allocated one storage unit, and reserved parking spaces in the underground garage.

“Perfect for those who are
caught up with the times
yet live a timeless lifestyle.”

MUSTAFA TONER
INTERIOR ARCHITECTURE



Interior architecture —

Blending the historical landscape of Kandilli and contemporary architecture, the project is a testament to how modern solutions can enhance traditional architecture. The carefully selected materials, colors and textures of the interior decoration complement the bold architectural lines of the project. Two design alternatives are offered, one featuring lighter shades of milk, beige and cream alongside light tones of wood, and the other featuring gray and earth tones with darker shades of wood. To allow sunlight to touch every corner of the homes and to create spacious areas, all rooms have floor to ceiling window panels. The calm, harmonious design of the project gives it a timeless and sophisticated air.



Spectacular interiors —

IN A PRIME LOCATION, OVERLOOKING THE
MAJESTIC BOSPHORUS, WITH INNOVATIVE
DESIGN IDEAS AND LUXURY BRANDS.

Each unit is a magnificent living space, designed
to empower, fulfill and inspire.

Timeless sophistication

Design is a
way of life,
not a luxury —

BEARING THE SIGNATURE OF
A WORLD RENOWNED DESIGNER.

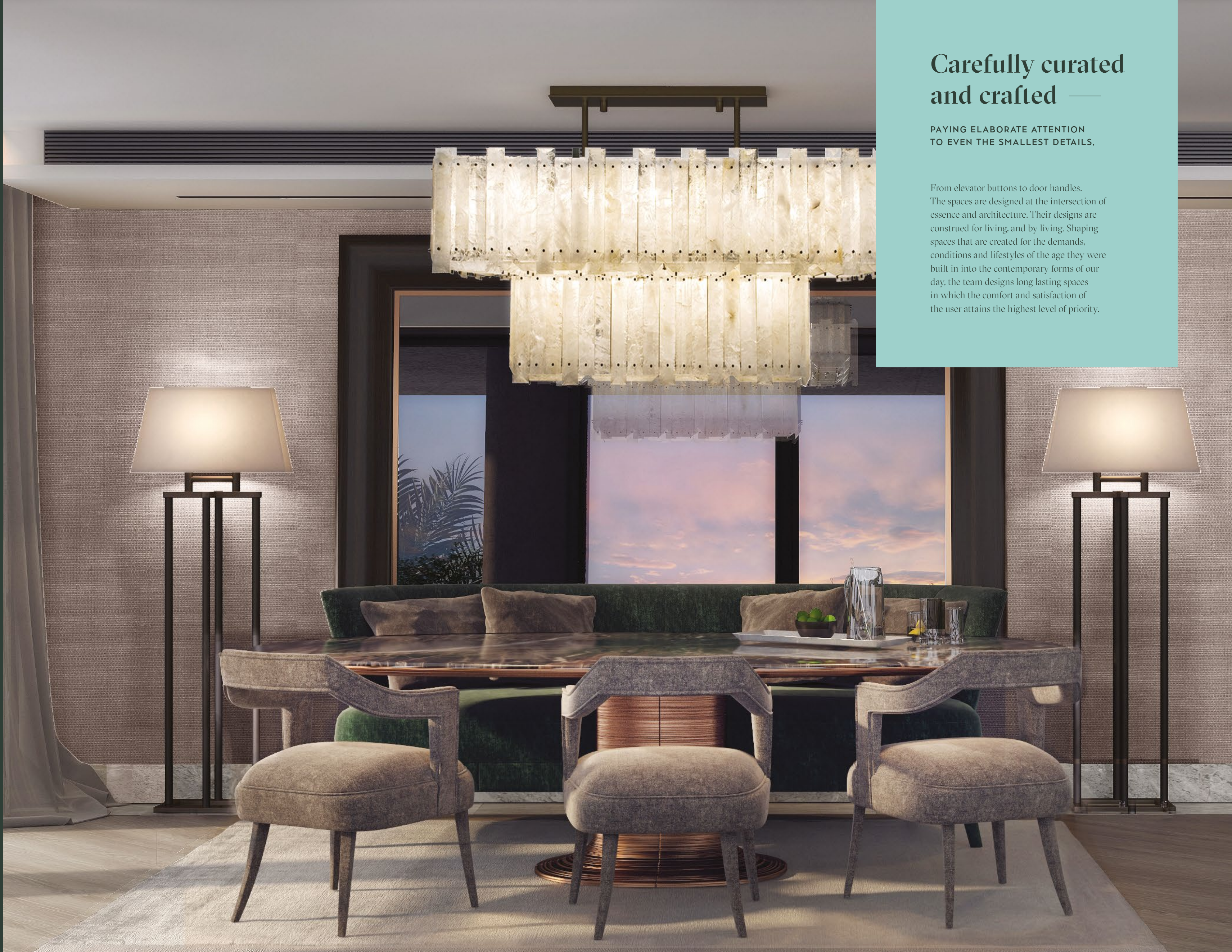
Homes created with life-enhancing ingenuity that supports the pursuit of fulfillment and freedom. The apartments keep pace with the times, while offering spaces that embody tranquility, timelessness and sophistication.



Carefully curated and crafted —

PAYING ELABORATE ATTENTION
TO EVEN THE SMALLEST DETAILS.

From elevator buttons to door handles. The spaces are designed at the intersection of essence and architecture. Their designs are construed for living, and by living. Shaping spaces that are created for the demands, conditions and lifestyles of the age they were built in into the contemporary forms of our day, the team designs long lasting spaces in which the comfort and satisfaction of the user attains the highest level of priority.





Designing not in square meters, but in square centimeters —

BRIGHT. ELEGANT. REFRESHING.

To echo the nature-inspired architecture and forest-like surroundings of the buildings, using light wood tones, with colors such as milk, beige and cream. Juxtaposing them with dark wood tones and earth shades, for a beautifully elegant impact.

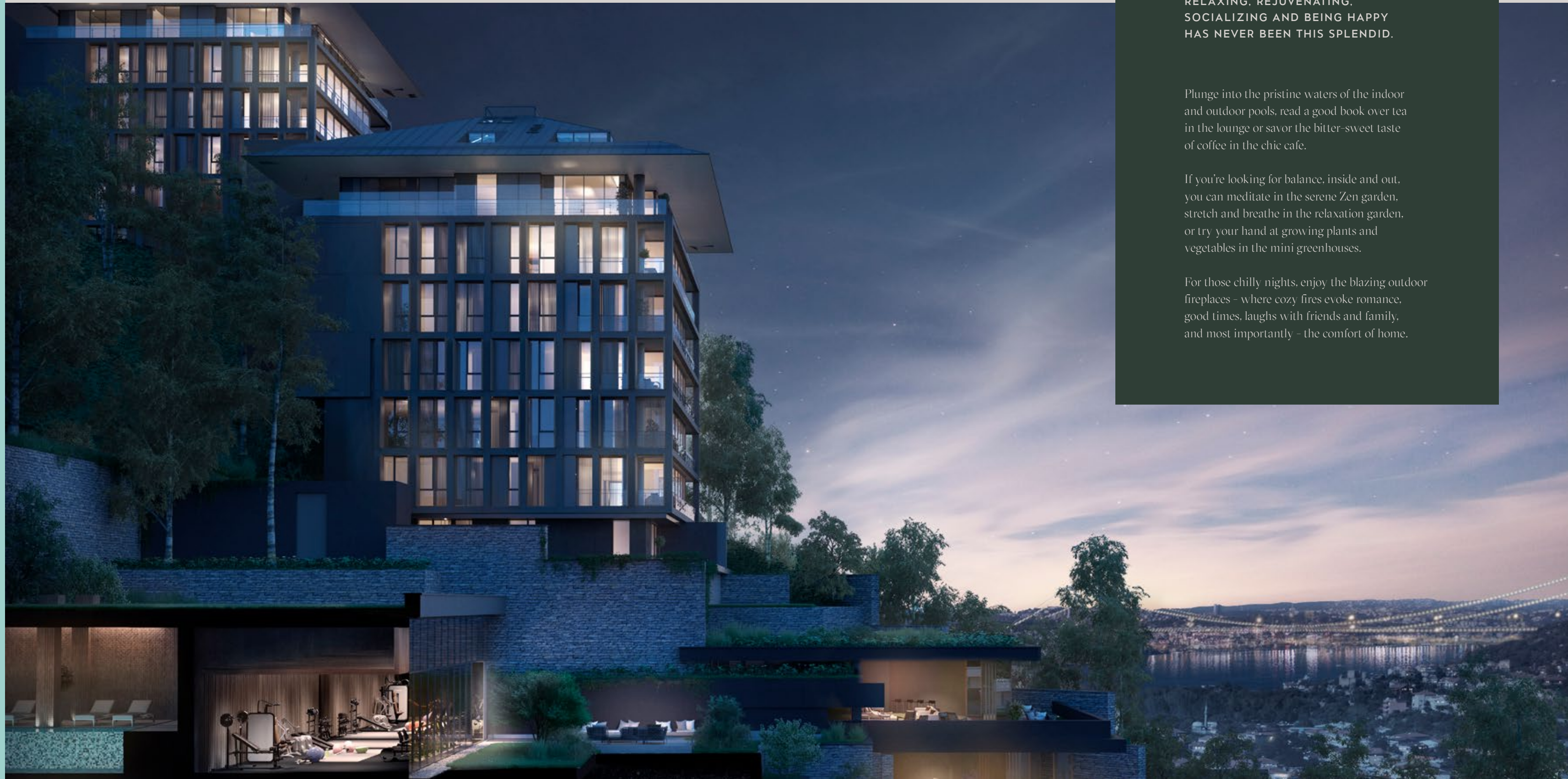
All the apartments feature glass systems and floor to ceiling panels, designed to welcome light and create a spacious and inspiring living space.



Contemporary beauty



YOUR
LIFESTYLE



Be relaxed, be happy —

RELAXING. REJUVENATING.
SOCIALIZING AND BEING HAPPY
HAS NEVER BEEN THIS SPLENDID.

Plunge into the pristine waters of the indoor and outdoor pools, read a good book over tea in the lounge or savor the bitter-sweet taste of coffee in the chic cafe.

If you're looking for balance, inside and out, you can meditate in the serene Zen garden, stretch and breathe in the relaxation garden, or try your hand at growing plants and vegetables in the mini greenhouses.

For those chilly nights, enjoy the blazing outdoor fireplaces - where cozy fires evoke romance, good times, laughs with friends and family, and most importantly - the comfort of home.



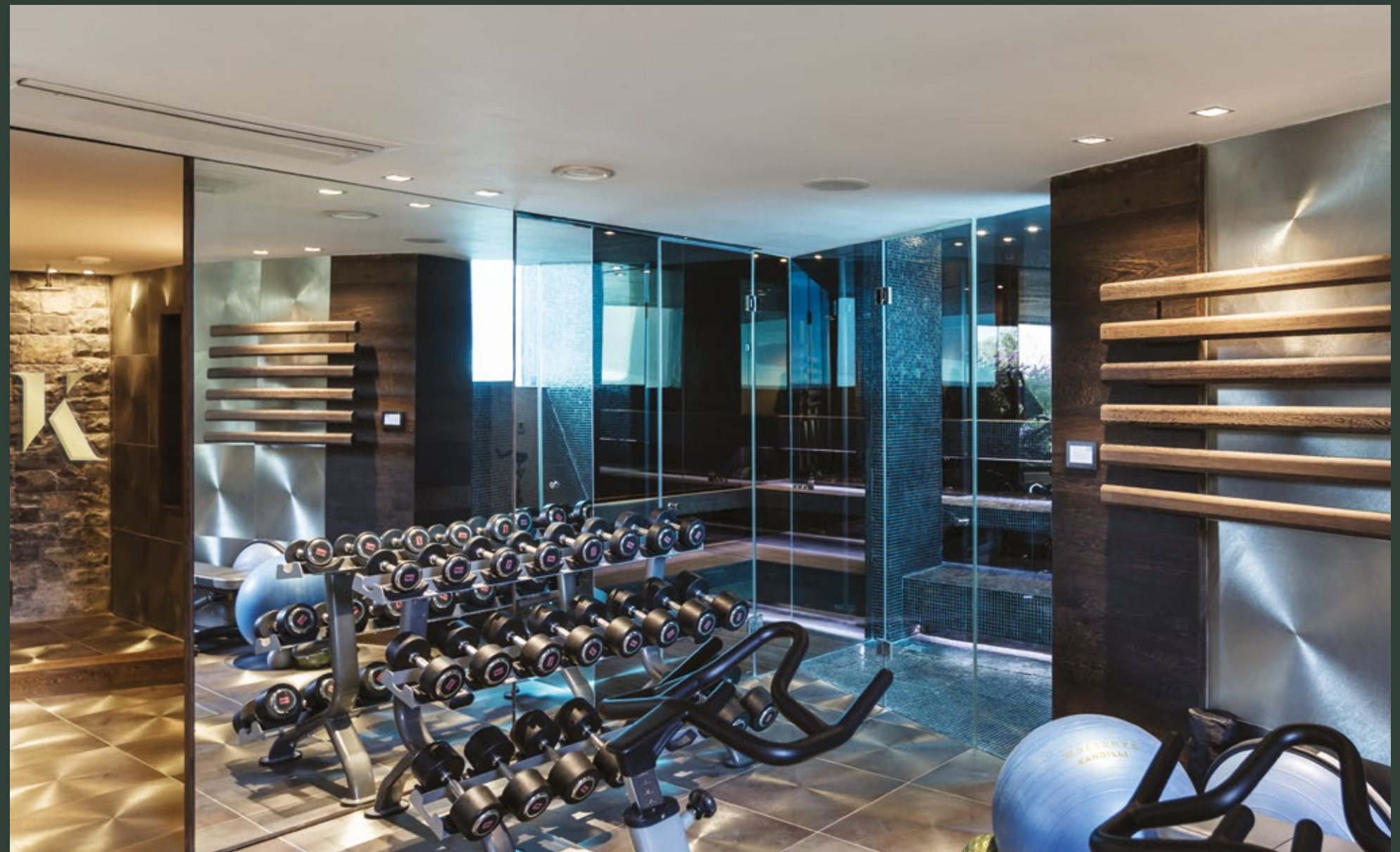


A healthy mindset —

YOUR DAILY ENERGY BOOST.
TO GET FIT AND STRONG.

In the Nef Reserve Kandilli the energy of happiness and inspiration courses through each and every aspect, particularly the specialized, state-of-the-art indoor gym and outdoor sports courts. Here you'll discover the pleasures of training, staying fit and healthy, playing with friends and neighbors – getting that positive adrenaline rush that keeps you feeling refreshed, strong and energized.

Active lifestyle

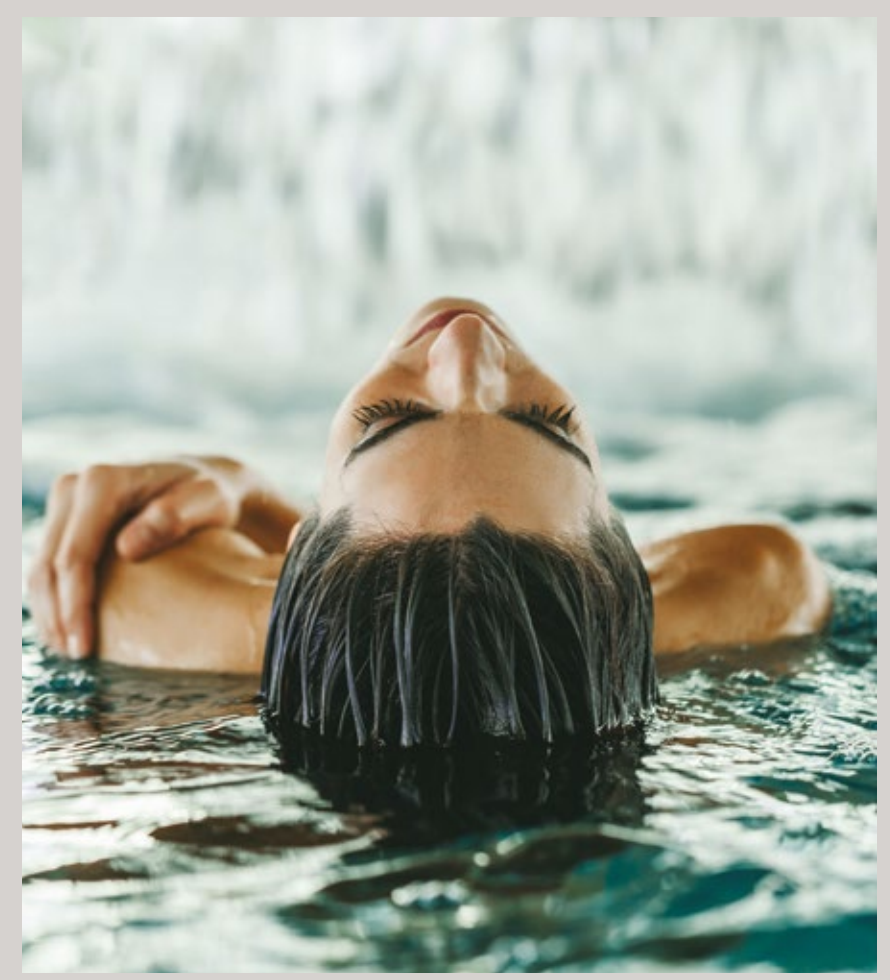
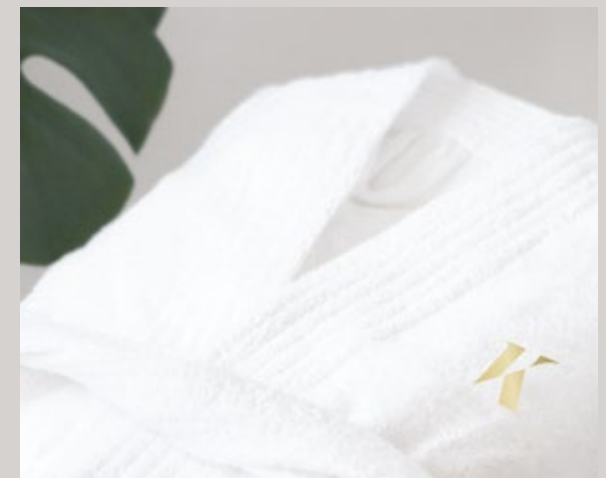


TAKE ADVANTAGE OF EVERYTHING
NEF RESERVE KANDILLI HAS TO OFFER

Pristine luxury —

DESIGNED FOR YOUR BALANCE.

The Nef idea of a healthy and happy Kandilli lifestyle comes to life most vividly in the spectacularly beautiful spa area, which offers you everything you need to relax and unwind. The crystal clear waters of the indoor and outdoor pools, the breathtaking views, and the elegance of the design all combine into an exceptional experience – one that will keep you balanced, rejuvenated and inspired.



Relax & Unwind

BEAUTIFULLY DESIGNED
FOR PURE ENJOYMENT

F&B Culture



STRONG FEELING OF COMMUNITY
AND PROFOUND SENSE OF BELONGING

Elegant and chic —

A SAVOURY SYMPHONY OF
DELICIOUS FOOD AND BEVERAGES.

The Nef Reserve Kandilli has a sweet and chic, friendly neighborhood eatery – the perfect place to grab a coffee a fresh-baked wrap on your way to work, have a chat with a friend over a fresh bowl of pasta, or indulge in an exciting book while slowly savoring the bitter-sweet taste of premium coffee.



Welcome to Foldhome Reserve

COMPLEMENTING THE BEAUTY AND FINESSE
OF THE PRIVATE, PERSONAL SPHERE

A unique Nef invention —

THE FOLDHOME CONCEPT OF
DYNAMIC SHARED SPACES AND
CURATED COMMUNITY AREAS.

To deliver an even more luxurious, bespoke experience of luxury home and vibrant community, NEF devised the Foldhome Reserve offer, including the use of a private studio, a spectacular home theater, a dedicated music room, and a playstation room.

Various features were created specifically for effortless entertaining, to make your guests feel the signature Kandilli welcome, such as the dazzling event room, the comfortable lounge, and the use of an extraordinary guest room for when you have friends or family visiting.

For the sports enthusiasts there is a state-of-the-art fitness studio, squash club, mini football field, and mini basketball court, so you can pair up, join friends, and have a few laughs while keeping fit and healthy

- Home theater
- Music room
- Playstation room
- Event room
- Guest room
- SPA
- Private studio
- Fitness studio
- Squash club
- Mini football field
- Mini basketball court
- Boat
- Golf Club



DYNAMIC SHARED SPACES AND
CURATED COMMUNITY AREAS



A new standard of fine home luxury



THE DETAILS

Tailored for you —

FLEXIBLE AND CONVENIENT PAYMENT.

Nef is proud to have achieved 95% client satisfaction and the highest number of sales continuously, each year. With the primary goal of each Nef development being to bring happiness to its residents, one of its trademarks is a flexible, convenient payment plan for cash and bank credits – tailored just for you. Your perfect home is here, in Kandilli, and Nef is here to help you find the fastest way to start living the Nef Reserve Kandilli lifestyle.

The payment plan

NEF WORKS WITH YOU TO COME UP WITH THE BEST POSSIBLE
SOLUTION FOR YOU AND YOUR NEW LUXURY HOME IN KANDILLI



THE DEVELOPER

Creating prestigious projects —

SETTING NEW STANDARDS FOR DEVELOPMENT IN TURKEY

Nef has the highest number of concurrent projects and the highest number of sales, as well as the highest sales turnover, consistently, year after year. Since 2010, Nef has developed 39 spectacular projects, with 95% client satisfaction. For its outstanding work and contribution Nef has been recognized with more than 70 awards. Nef has been selected as Turkey's most admired and respected real estate company. It's also the only construction company to appear on the top 100 most valuable companies list. Nef is also the global sponsor of the Galatasaray Football Club and the regional partner of FC Barcelona between the years of 2017 - 2019. The Nef promise is to create projects that allow the individual to grow through a modern, luxury lifestyle, while being part of a vibrant, dynamic and fulfilling community, both within the development and in its wider location.

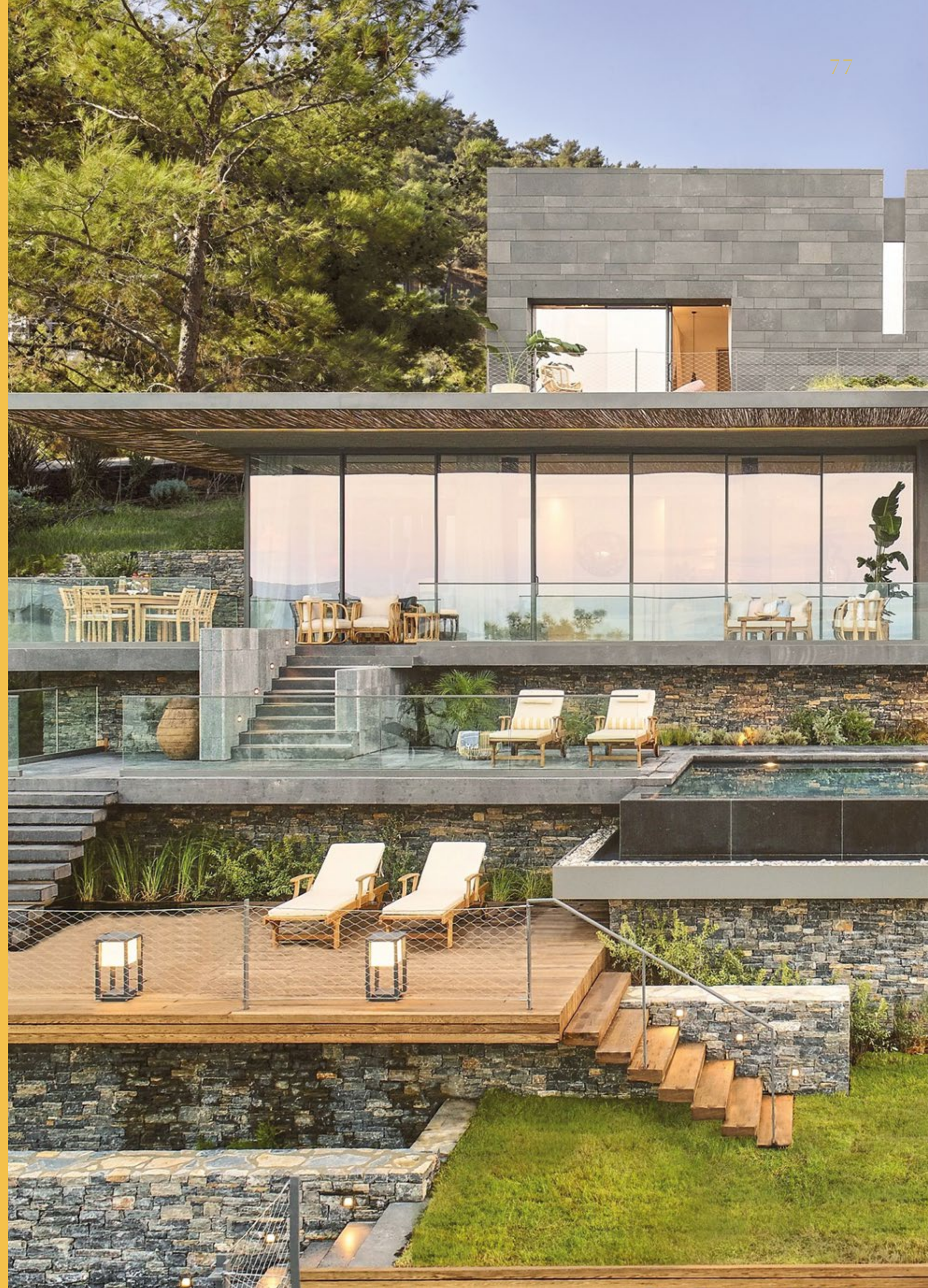
nef | R E S E R V E



nef | RESERVE GÖLKÖY

**STUNNING, NATURAL DESIGN AND
EXCLUSIVE BODRUM LOCATION.**

Nef Gököy is an exclusive project, situated in the pearl of the Bodrum region, and drawing on its stunning nature as inspiration. The development fits into the surrounding nature, without disrupting it, but rather using the inclination and geography of the terrain to create spectacular living spaces. The site was chosen for its unique beauty, while the 50 private villas were designed with an intention to interweave them smoothly into the natural pattern. They have extensive views over the bay area, and are ensconced in open pine woodland and olive trees.





B

nef | RESERVE
BEBEKÖY

HUGGING THE BOSPHORUS,
IN EXCITING BEBEK.

The inspirational Nef project comprises 15 originally designed buildings. It is a residential and commercial project, with an artistic and cultural heart, situated in the historic Istanbul neighborhood of Bebek, in stunning Bebek Bay, along the shores of the Bosphorus' European side.



nef | RESERVE YALIKAVAK

SOPHISTICATED MEDITERRANEAN
HOUSES IN TYPICAL BODRUM STYLE.

Famous for its amazing beaches and luxury marinas, Yalikavak has a new exclusive offering – the Nef Reserve Yalikavak, designed by one of the best architecture firms, Torti Gallas, as sophisticated and comfortable Mediterranean houses. For those who love nature, and seek serenity, this spectacular Nef development is the perfect place.

Located in the last beach front bay in Yalikavak, Bodrum. The development features a 460 m² private beach and a town square within the project.



Contact Details

444 9 633

NEF RESERVE KANDILLI SALES OFFICE
KANDILLI MAHALLESİ, FATİN HOCA SOKAĞI
NO:27, 34684 ÜSKÜDAR/İSTANBUL

FOR DETAILED INFORMATION
nef.com.tr/kandilli

